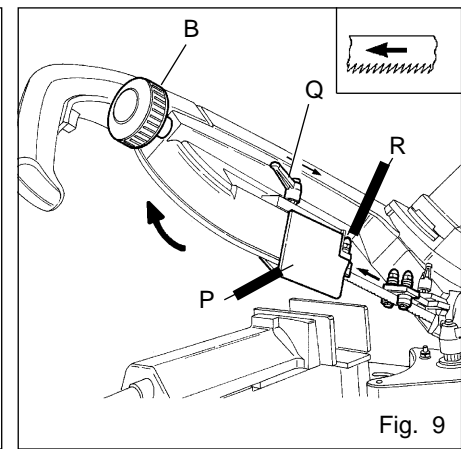
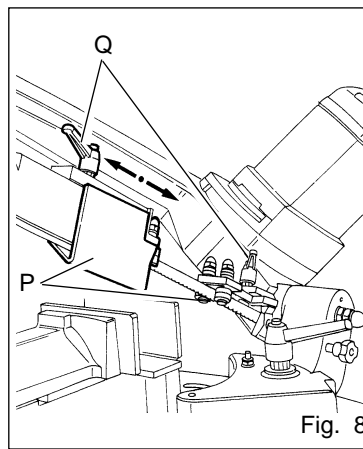
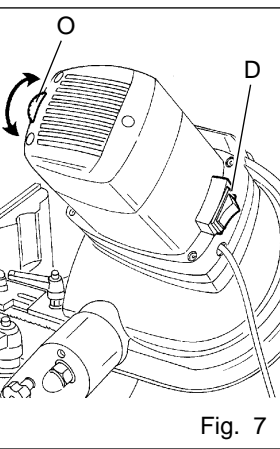
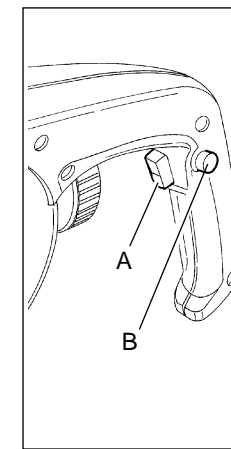
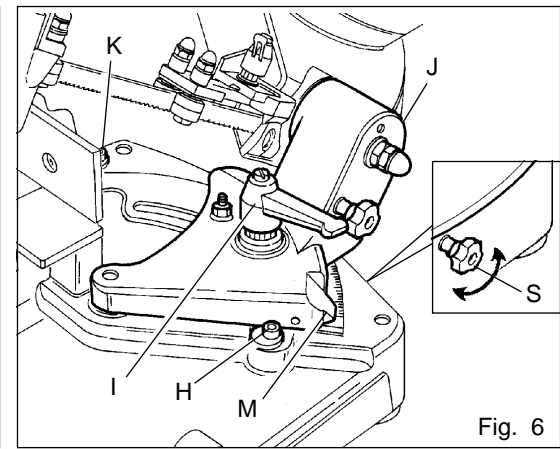
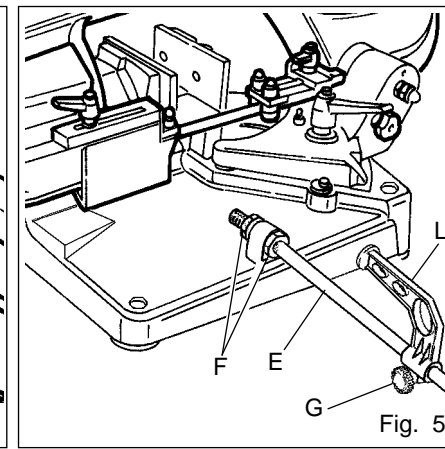
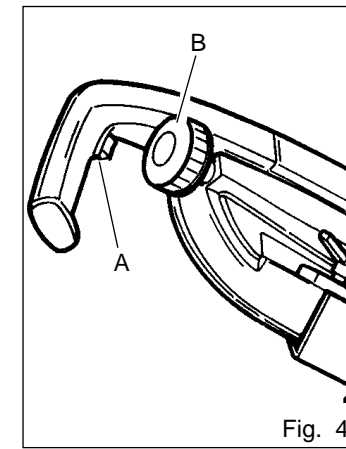
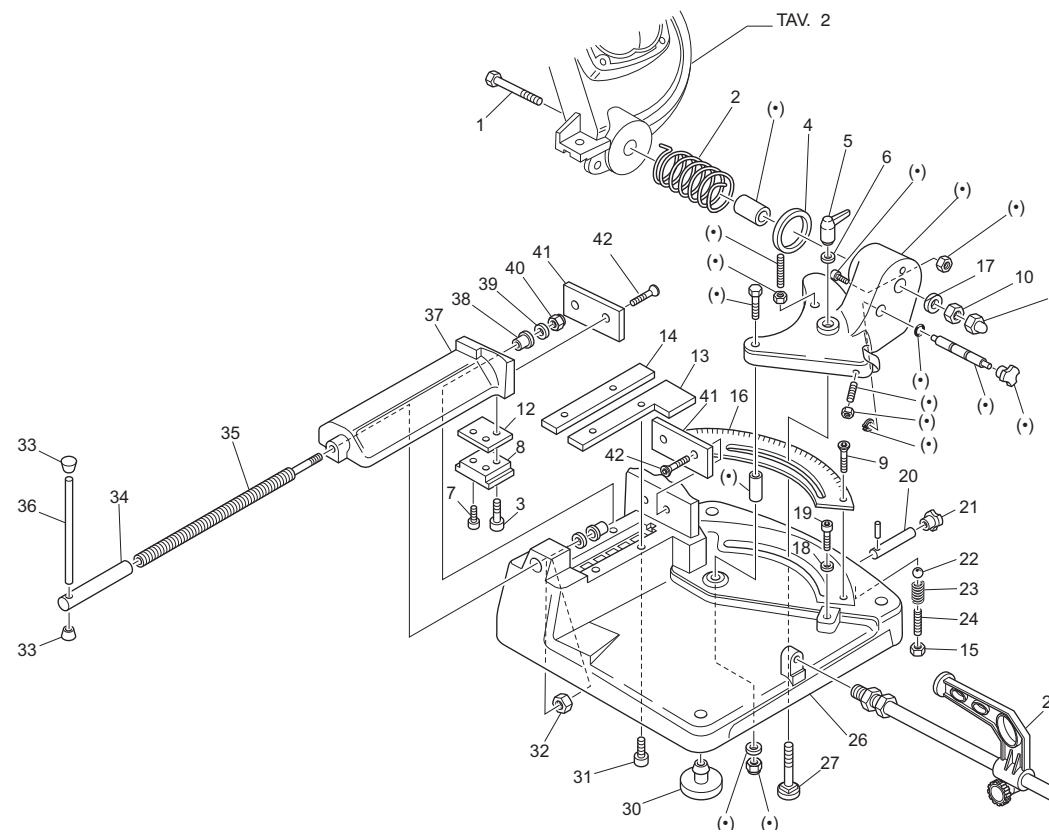


	ITALIANO	ENGLISH	DEUTSCH
PE	Circuito di protezione	Protection circuit	Erdung
IG	Interruttore generale luminoso	Main switch	Hauptschalter
PM	Pulsante di marcia	Run button	Handschalter
T	Disgiuntore termico di protezione	Thermal cut-off	Hitzeschutzunterbrecher
EMC	Filtro antidisturbo	Radio interference suppressor	Entstorer
L1	Induttanze 2x1 mH	Inductance 2x1 mH	Induktiv 2x1 mH
Cx	Condensatore 0,1 mF	Condensator 0,1 mF	Kondensator 0,1 mF
Cy	Condensatore 2z2500 pF	Condensator 2z2500 pF	Kondensator 2z2500 pF
Vv	Vanatore di velocità	Cutting speed adjustment	Geschwindigkeitsvariator
M1	Motore V 230 Hz 50/60 1300 Watt	Motor V 230 Hz 50/60 1300 Watt	Motor V 230 Hz 50/60 1300 Watt
1	G/V	Y/G	G/G
2	Rosso	Red	Rot
3	Nero	Black	Schwarz
4	Blu	Blue	Blau
5	Marrone	Brown	Braun
	FRANCAIS	ESPAÑOL	PORTUGUÊS
PE	Circuit de protection	Circuito de protección	Circuito de protecao
IG	Interrupteur général	Interrupteurgeneral	Interruptor general
PM	Bouton de marche	Pulsador de marcha	Botao de arranque
T	Disjoncteur thermique de protection	Disyuntar de proteccion	Disjuntor térmico de protecao
EMC	Filtre anti-brouillages	Filtro antiperturbaciones	Filtro anti-interferencia
L1	Inductance 2x1 mH	Inductancia 2x1 mH	Indutancia 2x1 mH
Cx	Condensateur 0,1 mF	Condensador 0,1 mF	Condensador 0,1 mF
Cy	Condensateur 2z2500 pF	Condensador 2z2500 pF	Condensador 2z2500 pF
Vv	Variateur de vitesse	Variador de velocidad	Reostato de velocidade
M	Moteur V 230 Hz 50/60 1300 Watt	MotorV 230 Hz 50/60 1300 Watt	Motor V 230 Hz 50/60 1300 Watt
1	J/V	A/V	A/V
2	Rouge	Rojo	Vermelino
3	Noir	Negro	Preto
4	Bleu	Azul	Azul
5	Marron	Marron	Castanho

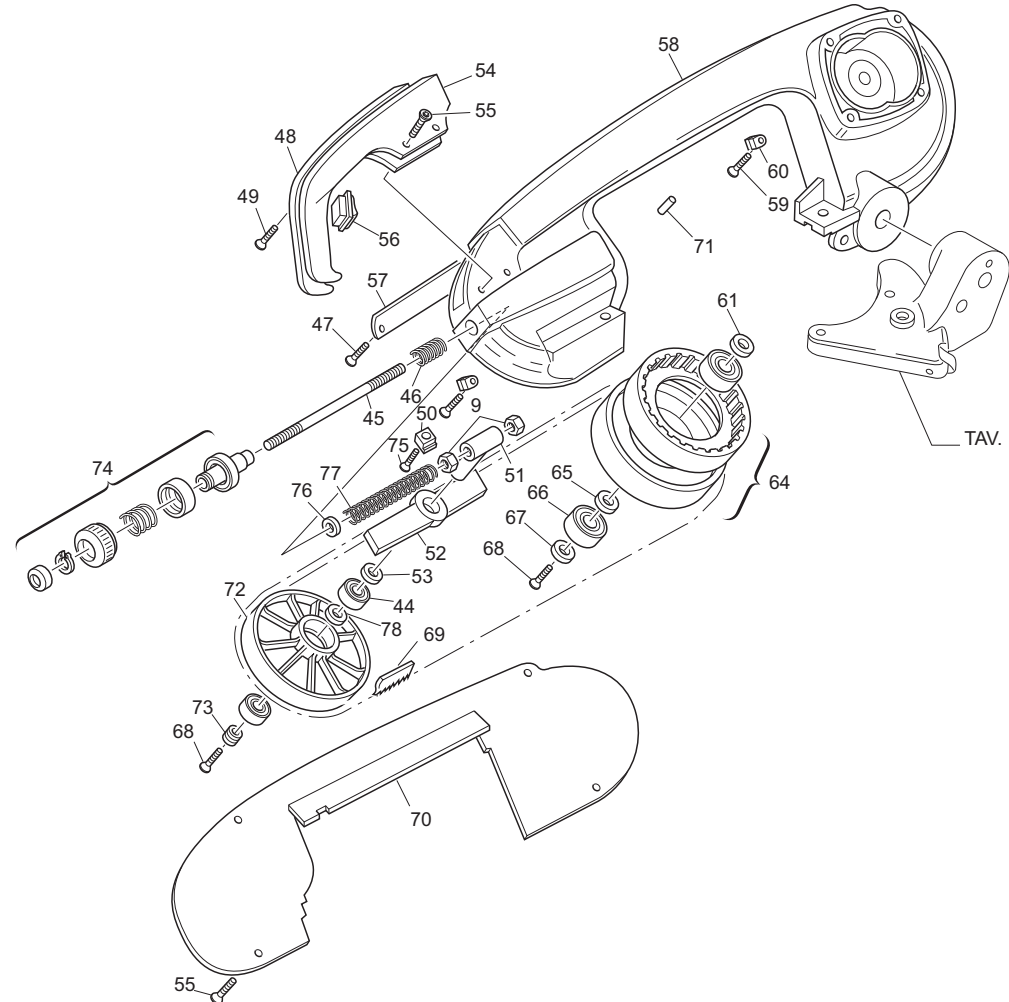


NR. 1



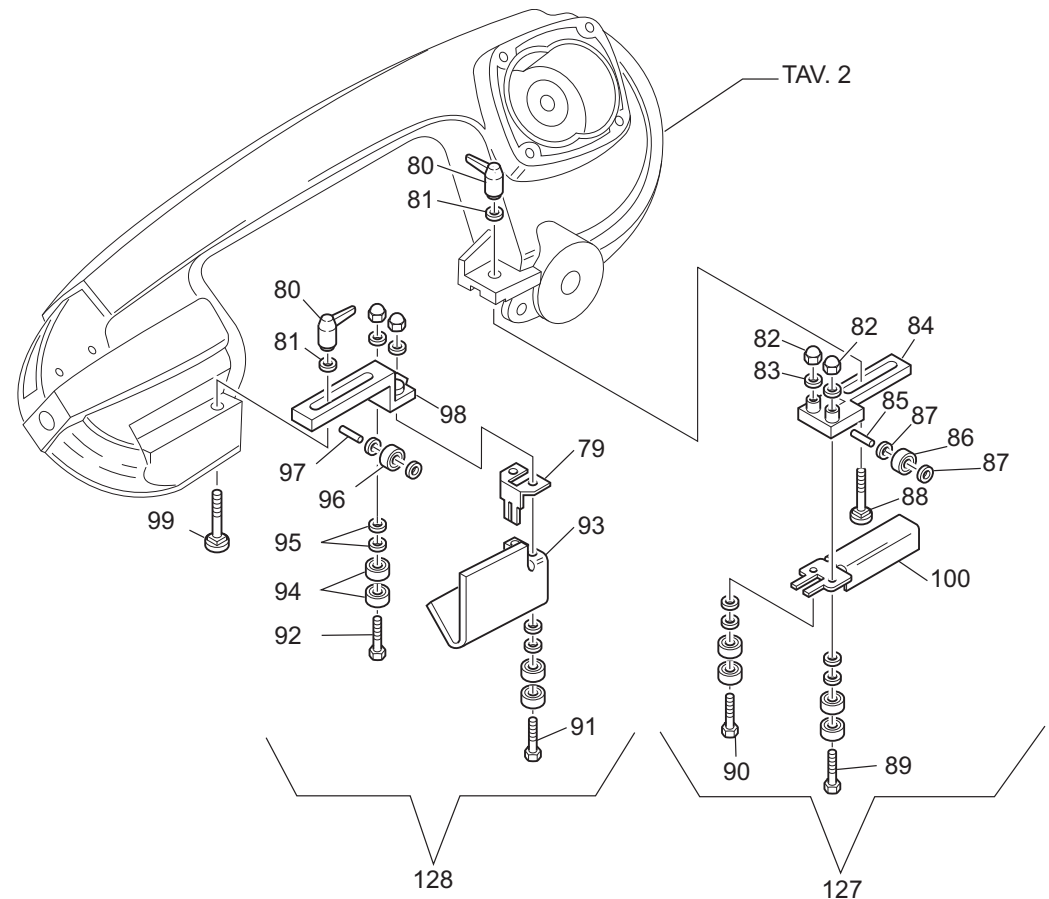
POS. /	COD./KOD.	NOTE/MERKE/NOTES NOTA/NOTAS
1	5.10.00.76	
2	5.08.01.16	
3	UNI 5931 M5 x 45	
4	0.15.51.43	
5	0.14.70.02	
6	0.12.07.10	
7	UNI 5931 M5 x 20	
8	5.13.04.28	
9	DIN 7500 M5x15	
10	UNI 5589 M10 x 1,5	
11	UNI 5721 M10	
12	5.13.04.16	
13	5.13.04.27	
14	5.13.04.26	
15	UNI 5588 M6	
16	5.18.17.22	
17	0.12.07.10	
18	5.12.40.29	
19	DIN 7500 M6 x 10	
20	5.17.10.47	
21	0.14.00.85	
22	0.17.00.04	
23	5.08.10.25	
24	UNI 5923 M6 x 14	
25	7.13.05.52	
26	5.04.35.60	
27	UNI 5732 M10 x 60	
28		
29		
30	5.13.77.93	
31	UNI 5931 M6 x 20	
32	UNI 5588 M16	
33	5.15.00.05	
34	5.06.30.34	
35	5.10.03.21	
36	5.14.20.14	
37	5.04.27.54	
38	0.06.30.41	
39	0.15.51.50	
40	UNI 7474 M8	
41	5.15.26.13	
42	5.15.26.14	
43		
44	0.59.60.02	
45	5.10.05.07	
46	0.08.02.56	
47	DIN 7500 M4 x 8	
48	5.05.01.29	
49	UNI 6954 P8 x 25	
50	5.13.07.34	
51	5.00.15.72	
52	5.13.79.14	
53	0.15.51.52	
54	5.05.01.28	
55	DIN 7500 M5 x 10	
56	0.80.23.24	
57	5.18.17.27	
58	5.04.28.45	
59	DIN 7500 M4x 15	
60	5.15.41.03	
61	5.12.40.64	
62		
63		
64	7.21.42.12	
65	5.12.40.65	
66	0.60.62.05	
67	5.12.40.66	
68	UNI 5933 M6 x 15	
69	3.27.73.48	
70	5.18.17.28	
71	0.17.99.01	
72	5.21.42.25	

NR. 3



POS. /	COD./KOD.	NOTE/MERKE/NOTES NOTA/NOTAS
73	5.12.40.62	
74	7.13.05.89	
75	DIN 7500 M5 x 20	
76	0.12.40.26	
77	5.08.10.05	
78	5.12.06.63	
79	5.18.17.38	
80	0.14.70.00	
81	0.12.07.06	
82	UNI 5721 M6	
83	UNI 1751 Ø 6	
84	5.13.07.74	
85	0.17.40.16	
86	0.59.06.34	
87	0.12.90.04	
88	UNI 5732 M6 x 20	
89	5.10.00.75	
90	5.10.00.74	
91	5.10.00.65	
92	5.10.00.64	
93	5.18.18.43	
94	0.60.06.07	
95	5.12.06.38	
96	0.59.06.24	
97	0.17.40.22	
98	5.13.09.32	
99	5.10.03.48	
100	5.18.17.29	
101	5.15.45.01	
102	5.87.08.43	
103	DIN 7500 M4 x 25	
104	5.85.00.08	
105	7.01.31.42	
106	0.81.60.08	
107	0.81.60.04	
108	5.85.01.11	
109	7.82.01.12	
110	5.18.28.57	
111	UNI 6954 P6 x 25	
112	UNI 6954 P7 x 16	
113	0.80.23.16	
114	7.21.30.16	
115	5.18.25.42	
116	UNI 5931 M5x25	
117	0.60.06.08	
118	5.18.20.06	
119	5.06.30.40	
120	UNI 5931 M5x18	
121	0.60.60.01	
122		
123	5.02.41.15	
124	5.85.01.12	
125	5.06.10.38	
126	7.80.18.17	
127	7.13.25.03	
128	7.13.25.12	
129	5.18.28.56	
130	0.32.05.25	
(*)	7.13.36.22	

NR. 2



NR. 4

